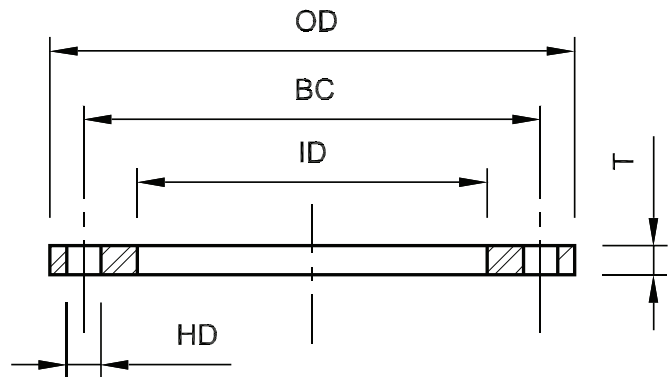


# PLATE FLANGES

## 304L & 316L STAINLESS STEEL

- Dimensions are given in inches.
- All plate flanges are flat face.
- Lap joint application (as back-up) for use with flat or angle type face rings can be furnished upon request.
- Drilling is 150# class.



NOMINAL PIPE SIZE	LBS	ID	OD	T (PLATE FLG)	T (SS BU FLG)	BC	HD	BOLT SIZE	NUMBER OF BOLT HOLES
1/2	1.10	.880	3 1/2	1/2	1/2	2 3/8	5/8	1/2	4
3/4	1.40	1.090	3 7/8	1/2	1/2	2 3/4	5/8	1/2	4
1	2.00	1.360	4 1/4	1/2	1/2	3 1/8	5/8	1/2	4
1 1/4	2.30	1.700	4 5/8	1/2	1/2	3 1/2	5/8	1/2	4
1 1/2	2.30	1.950	5	1/2	1/2	3 7/8	5/8	1/2	4
2	3.30	2.440	6	1/2	1/2	4 3/4	3/4	5/8	4
2 1/2	4.60	2.940	7	1/2	1/2	5 1/2	3/4	5/8	4
3	4.90	3.570	7 1/2	1/2	1/2	6	3/4	5/8	4
4	6.70	4.570	9	1/2	1/2	7 1/2	3/4	5/8	8
5	7.40	5.660	10	1/2	1/2	8 1/2	7/8	3/4	8
6	8.40	6.720	11	1/2	1/2	9 1/2	7/8	3/4	8
8	12.00	8.720	13 1/2	1/2	1/2	11 3/4	7/8	3/4	8
10	18.80	10.880	16	1/2	1/2	14 1/4	1	7/8	12
12	27.30	12.880	19	1/2	1/2	17	1	7/8	12
14	33.60	14.140	21	1/2	1/2	18 3/4	1 1/8	1	12
16	48.40	16.160	23 1/2	1/2	1/2	21 1/4	1 1/8	1	16
18	68.00	18.180	25	1/2	1/2	22 3/4	1 1/4	1 1/8	16
20	75.60	20.200	27 1/2	1/2	1/2	25	1 1/4	1 1/8	20
24	95.50	24.250	32	1/2	1/2	29 1/2	1 3/8	1 1/4	20
30	126.00	30.250	38 3/4	1/2	1/2	36	1 3/8	1 1/4	28
36	211.00	36.250	46	1/2	1/2	42 3/4	1 5/8	1 1/2	32

FLANGES