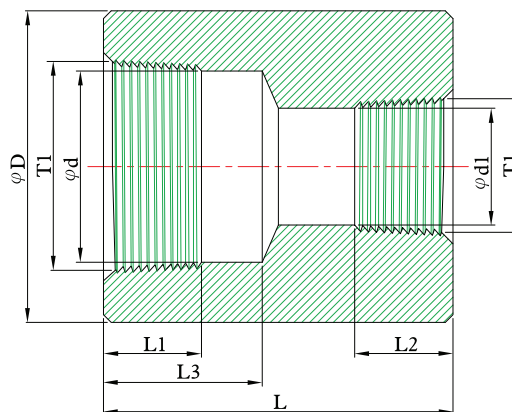
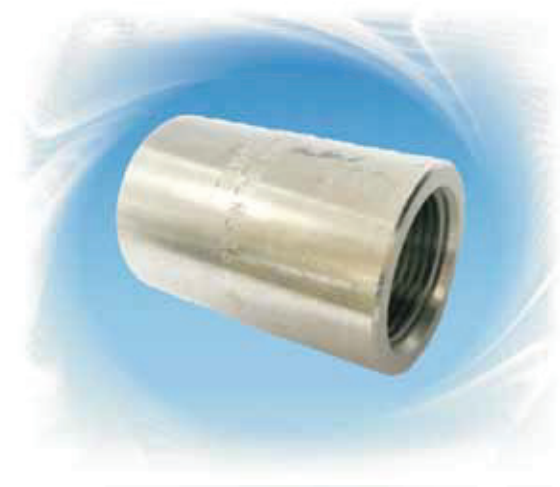


REDUCING COUPLINGS - THREADED



DIMENSIONS

unit : inch

| SIZE | T1-n | T2-n | L | D | d | d1 | L1 | L2 | L3 |
|--------------|------|------|------|------|------|------|------|------|------|
| 1/4 x1/8 | 0.71 | 1.06 | 1.38 | 0.75 | 0.44 | 0.32 | 0.50 | 0.35 | 0.69 |
| 3/8 x1/8 | 0.71 | 1.06 | 1.50 | 0.87 | 0.57 | 0.32 | 0.52 | 0.35 | 0.75 |
| 3/8 x1/4 | 0.71 | 0.71 | 1.50 | 0.87 | 0.57 | 0.44 | 0.52 | 0.50 | 0.75 |
| 1/2 x1/4 | 0.55 | 0.71 | 1.89 | 1.10 | 0.68 | 0.44 | 0.68 | 0.50 | 0.94 |
| 1/2 x3/8 | 0.55 | 0.71 | 1.89 | 1.10 | 0.68 | 0.57 | 0.68 | 0.52 | 0.94 |
| 3/4 x3/8 | 0.55 | 0.71 | 2.01 | 1.38 | 0.89 | 0.57 | 0.70 | 0.52 | 1.00 |
| 3/4 x1/2 | 0.55 | 0.55 | 2.01 | 1.38 | 0.89 | 0.68 | 0.70 | 0.68 | 1.00 |
| 1 x3/8 | 0.45 | 0.71 | 2.36 | 1.73 | 1.12 | 0.57 | 0.83 | 0.52 | 1.18 |
| 1 x1/2 | 0.45 | 0.55 | 2.36 | 1.73 | 1.12 | 0.68 | 0.83 | 0.68 | 1.18 |
| 1 x3/4 | 0.45 | 0.55 | 2.36 | 1.73 | 1.12 | 0.89 | 0.83 | 0.70 | 1.18 |
| 1-1/4 x1/2 | 0.45 | 0.55 | 2.64 | 2.24 | 1.46 | 0.68 | 0.85 | 0.68 | 1.32 |
| 1-1/4 x3/4 | 0.45 | 0.55 | 2.64 | 2.24 | 1.46 | 0.89 | 0.85 | 0.70 | 1.32 |
| 1-1/4 x1 | 0.45 | 0.45 | 2.64 | 2.24 | 1.46 | 1.12 | 0.85 | 0.83 | 1.32 |
| 1-1/2 x1/2 | 0.45 | 0.55 | 3.11 | 2.52 | 1.70 | 0.68 | 0.85 | 0.68 | 1.56 |
| 1-1/2 x3/4 | 0.45 | 0.55 | 3.11 | 2.52 | 1.70 | 0.89 | 0.85 | 0.70 | 1.56 |
| 1-1/2 x1 | 0.45 | 0.45 | 3.11 | 2.52 | 1.70 | 1.12 | 0.85 | 0.83 | 1.56 |
| 1-1/2 x1-1/4 | 0.45 | 0.45 | 3.11 | 2.52 | 1.70 | 1.46 | 0.85 | 0.85 | 1.56 |
| 2 x3/4 | 0.45 | 0.55 | 3.39 | 2.99 | 2.17 | 0.89 | 0.87 | 0.70 | 1.69 |
| 2 x1 | 0.45 | 0.45 | 3.39 | 2.99 | 2.17 | 1.12 | 0.87 | 0.83 | 1.69 |
| 2 x1-1/4 | 0.45 | 0.45 | 3.39 | 2.99 | 2.17 | 1.46 | 0.87 | 0.85 | 1.69 |
| 2 x1-1/2 | 0.45 | 0.45 | 3.39 | 2.99 | 2.17 | 1.70 | 0.87 | 0.85 | 1.69 |
| 2-1/2 x1 | 0.31 | 0.45 | 3.62 | 3.62 | 2.58 | 1.12 | 1.18 | 0.83 | 1.81 |
| 2-1/2 x1-1/4 | 0.31 | 0.45 | 3.62 | 3.62 | 2.58 | 1.46 | 1.18 | 0.85 | 1.81 |
| 2-1/2 x1-1/2 | 0.31 | 0.45 | 3.62 | 3.62 | 2.58 | 1.70 | 1.18 | 0.85 | 1.81 |
| 2-1/2 x2 | 0.31 | 0.45 | 3.62 | 3.62 | 2.58 | 2.17 | 1.18 | 0.87 | 1.81 |
| 3 x1 | 0.31 | 0.45 | 4.25 | 4.25 | 3.21 | 1.12 | 1.27 | 0.83 | 2.13 |
| 3 x1-1/4 | 0.31 | 0.45 | 4.25 | 4.25 | 3.21 | 1.46 | 1.27 | 0.85 | 2.13 |
| 3 x1-1/2 | 0.31 | 0.45 | 4.25 | 4.25 | 3.21 | 1.70 | 1.27 | 0.85 | 2.13 |
| 3 x2 | 0.31 | 0.45 | 4.25 | 4.25 | 3.21 | 2.17 | 1.27 | 0.87 | 2.13 |
| 3 x2-1/2 | 0.31 | 0.31 | 4.25 | 4.25 | 3.21 | 2.58 | 1.27 | 1.18 | 2.13 |
| 4 x1-1/4 | 0.31 | 0.45 | 4.76 | 5.51 | 4.20 | 1.46 | 1.34 | 0.85 | 2.38 |
| 4 x1-1/2 | 0.31 | 0.45 | 4.76 | 5.51 | 4.20 | 1.70 | 1.34 | 0.85 | 2.38 |
| 4 x2 | 0.31 | 0.45 | 4.76 | 5.51 | 4.20 | 2.17 | 1.34 | 0.87 | 2.38 |
| 4 x2-1/2 | 0.31 | 0.31 | 4.76 | 5.51 | 4.20 | 2.58 | 1.34 | 1.18 | 2.38 |

FORGED FITTINGS