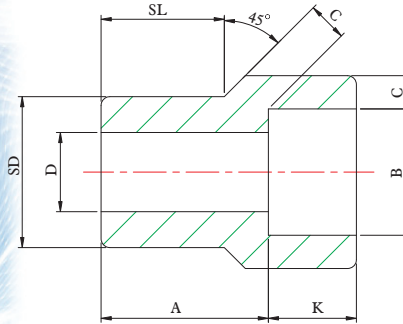
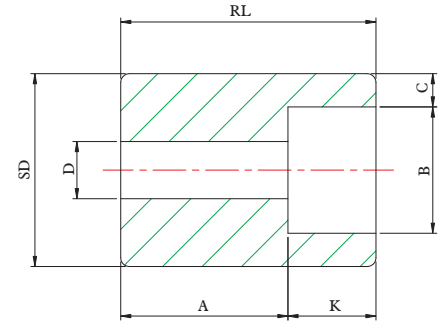


REDUCING INSERTS



TYPE 1



TYPE 2 ⁽¹⁾

DIMENSIONS

unit : inch

FORGED FITTINGS

Nom. Pipe Size	Type (2)		Socket		Shank Dia. SD	Laying Length A		Bore D		Wall (Min) C		Length			
			Dia.	Depth (Min)		A		D		C		SL		RL (Min)	
	3M	6M	B	K		3M	6M	3M	6M	3M	6M	3M	6M	3M	6M
3/8 X 1/4	1	1	0.56	0.39	0.68	0.75	0.83	0.35	0.26	0.15	0.18	0.55	0.63	-	-
1/2 X 3/8	1	1	0.70	0.39	0.84	0.83	0.91	0.49	0.35	0.16	0.20	0.63	0.63	-	-
1/2 X 1/4	1	1	0.56	0.39	0.84	0.83	0.83	0.35	0.26	0.15	0.18	0.63	0.63	-	-
3/4 X 1/2	1	1	0.86	0.39	1.05	0.87	0.98	0.63	0.47	0.18	0.24	0.67	0.75	-	-
3/4 X 3/8	2	1	0.70	0.39	1.05	0.63	0.87	0.49	0.35	0.16	0.20	-	0.75	1.06	-
3/4 X 1/4	2	2	0.56	0.39	1.05	0.71	0.87	0.35	0.26	0.15	0.18	-	-	1.06	1.26
1 X 3/4	1	1	1.08	0.51	1.31	0.94	1.10	0.83	0.61	0.19	0.27	0.75	0.83	-	-
1 X 1/2	2	1	0.86	0.39	1.31	0.63	1.10	0.63	0.47	0.18	0.24	-	0.83	1.10	-
1 X 3/8	2	2	0.70	0.39	1.31	0.71	0.87	0.49	0.35	0.16	0.20	-	-	1.10	1.30
1 X 1/4	2	2	0.56	0.39	1.31	0.75	0.94	0.35	0.26	0.15	0.18	-	-	1.10	1.30
1-1/4 X 1	1	1	1.34	0.51	1.66	0.98	1.18	1.04	0.81	0.22	0.31	0.83	0.87	-	-
1-1/4 X 3/4	2	2	1.08	0.51	1.66	0.71	0.83	0.83	0.61	0.19	0.27	-	-	1.26	1.38
1-1/4 X 1/2	2	2	0.86	0.39	1.66	0.75	0.87	0.63	0.47	0.18	0.24	-	-	1.26	1.38
1-1/4 X 3/8	2	2	0.70	0.39	1.66	0.83	0.94	0.49	0.35	0.16	0.20	-	-	1.26	1.38
1-1/4 X 1/4	2	2	0.56	0.39	1.66	0.87	0.98	0.35	0.26	0.15	0.18	-	-	1.26	1.38
1-1/2 X 1-1/4	1	1	1.69	0.51	1.90	1.10	1.38	1.38	1.15	0.24	0.31	0.87	0.98	-	-
1-1/2 X 1	2	1	1.34	0.51	1.90	0.71	1.13	1.04	0.81	0.22	0.31	-	0.98	1.30	-
1-1/2 X 3/4	2	2	1.08	0.51	1.90	0.75	0.98	0.83	0.61	0.19	0.27	-	-	1.30	1.57
1-1/2 X 1/2	2	2	0.86	0.39	1.90	0.83	1.06	0.63	0.47	0.18	0.24	-	-	1.30	1.57
1-1/2 X 3/8	2	2	0.70	0.39	1.90	0.87	1.10	0.49	0.35	0.16	0.20	-	-	1.30	1.57
2 X 1-1/2	1	1	1.93	0.51	2.38	1.26	1.54	1.61	1.34	0.25	0.35	0.98	1.10	-	-
2 X 1-1/4	2	2	1.69	0.51	2.38	0.83	0.94	1.38	1.15	0.24	0.31	-	-	1.50	1.61
2 X 1	2	2	1.34	0.51	2.38	0.87	0.98	1.04	0.83	0.22	0.31	-	-	1.50	1.61
2 X 3/4	2	2	1.08	0.51	2.38	0.94	1.06	0.83	0.61	0.19	0.27	-	-	1.50	1.61
2 X 1/2	2	2	0.86	0.39	2.37	0.98	1.10	0.62	0.47	0.18	0.23	-	-	1.50	1.61

1. At the option of the manufacturer type 2 Reducers may be furnished in type 1 configuration .
2. 3M & 6M symbols 3000 and 6000 classes .