

8

7

6

5

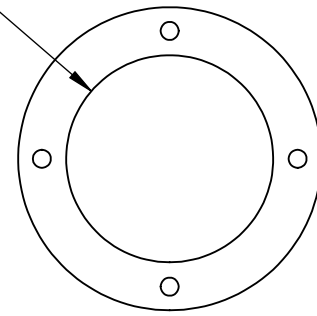
4

3

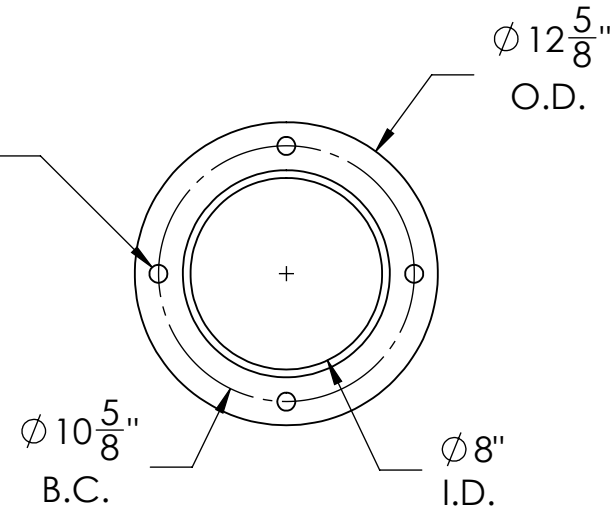
2

1

Ø 8 5/8"
BOLLARD
O.D.

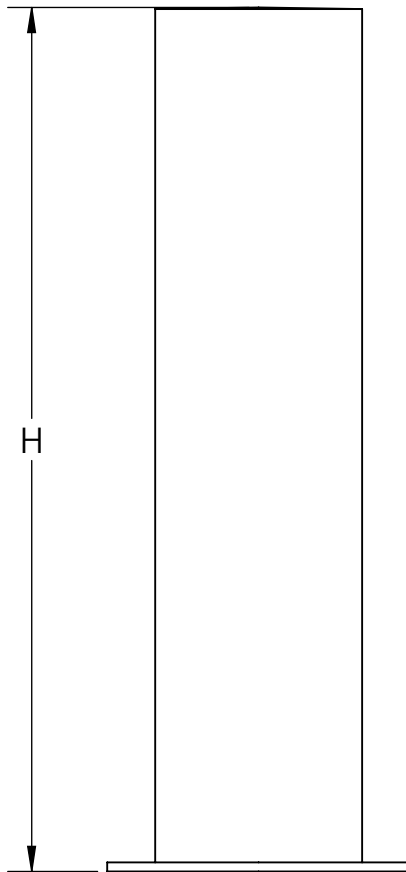


Ø 3/4" FOR 5/8" BOLTS
X4



BOLLARD SELECTION

SELECTION	PART NUMBER	HEIGHT (H)	MATERIAL
	FB4F0836-S	36"	304 SS
	FB4F0842-S	42"	
	FB6F0836-S	36"	316 SS
	FB6F0842-S	42"	
	FBCF0836-S	36"	CARBON STEEL
	FBCF0842-S	42"	



#4 CIRCUMFERENTIAL
BRUSHED FINISH
(SS ONLY)

#4 CIRCUMFERENTIAL
BRUSHED FINISH. TOP &
OUTSIDE EDGE
(SS ONLY)



NOTES:

1. NON-RATED BOLLARD SHOWN
2. NO HARDWARE INCLUDED
3. FOR CARBON STEEL - ZINC RICH PRIME STANDARD FINISH. GALVANIZE OR POWDERCOAT OPTIONS AVAILABLE
4. FOR STAINLESS STEEL - OPTIONAL UPGRADE TO #6 BRUSHED FINISH AVAILABLE

	NAME	DATE	 986 ROSEDALE DR. HIRAM, GA 30141 (678) 915-2080
DRAWN BY	S.J.	12/18/2019	
CHECKED BY	J.HU.	12/18/2019	
PROPRIETARY AND CONFIDENTIAL THE INFORMATION CONTAINED IN THIS DRAWING IS THE SOLE PROPERTY OF SHAW STAINLESS LLC. ANY REPRODUCTION IN PART OR AS A WHOLE WITHOUT THE WRITTEN PERMISSION OF SHAW STAINLESS LLC IS PROHIBITED.			DESCRIPTION: 8" FLAT TOP SURFACE MOUNT BOLLARD REV. ITEM NO: SEE SELECTOR
NO MANUAL REVISIONS/CHANGES ALLOWED			SHEET 1 OF 1

8

7

6

5

4

3

2

1