

8

7

6

5

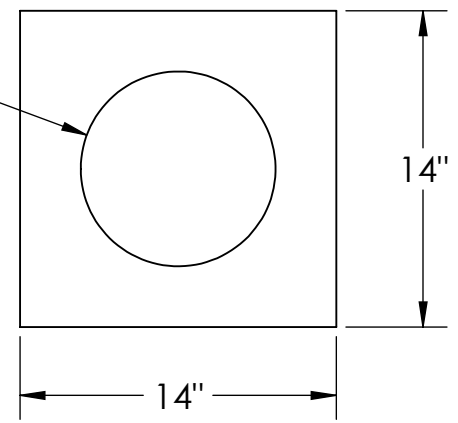
4

3

2

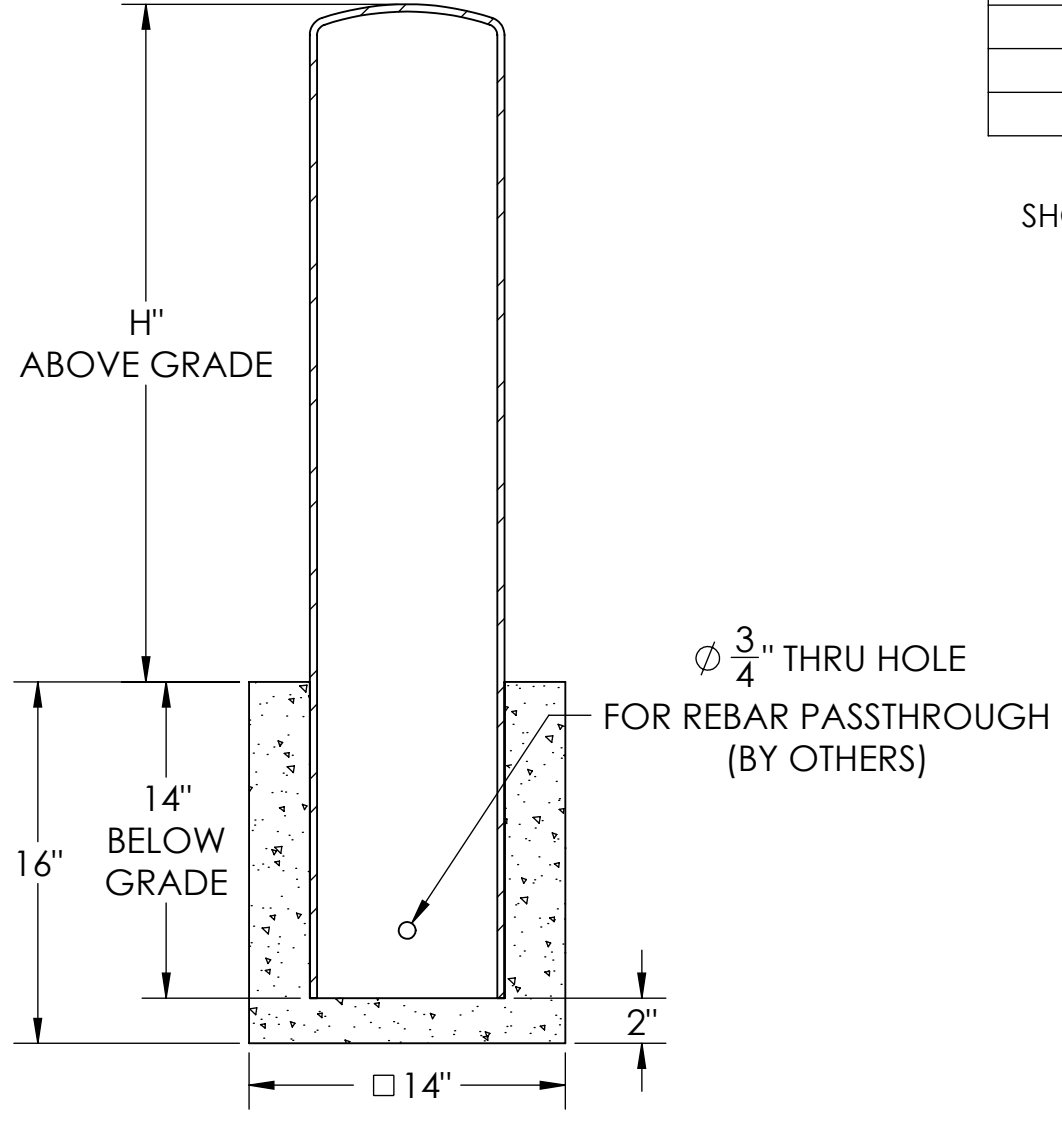
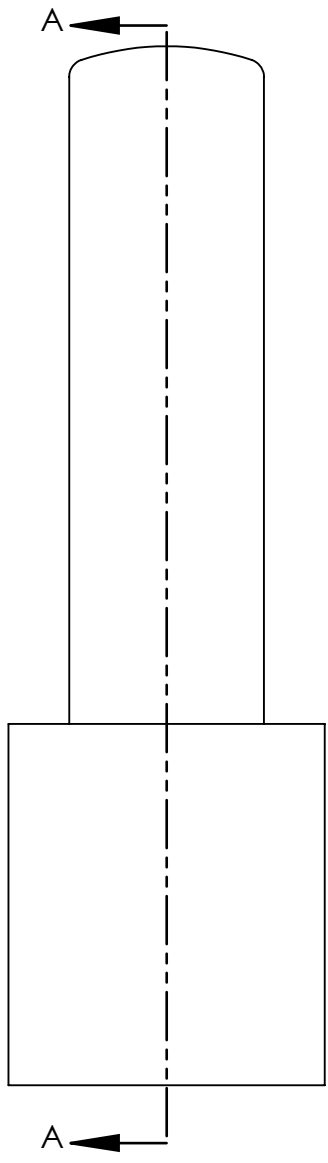
1

$\phi 8\frac{5}{8}$ "
O.D.



BOLLARD SELECTION

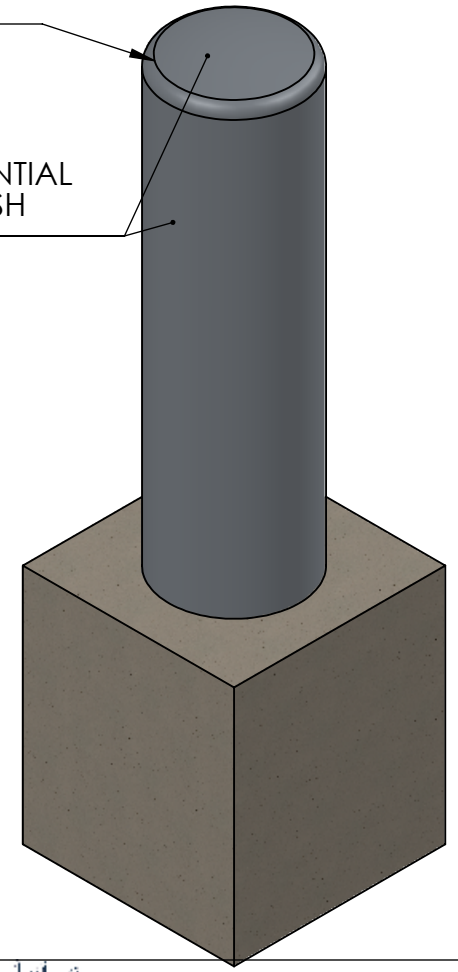
SELECTION	PART NUMBER	ABOVE GRADE HEIGHT (H)	MATERIAL	WEIGHT
	FB4D0830-F	30"	304 SS	109LBS
	FB4D0836-F	36"		124LBS
	FB4D0839-F	39.5"		132LBS
	FB4D0842-F	42"		138LBS
	FB6D0830-F	30"	316L SS	110LBS
	FB6D0836-F	36"		124LBS
	FB6D0839-F	39.5"		133LBS
	FB6D0842-F	42"		139LBS
	FBCD0830-F	30"	CARBON STEEL	107LBS
	FBCD0836-F	36"		121LBS
	FBCD0839-F	39.5"		129LBS
	FBCD0842-F	42"		135LBS



TANGENT LINES SHOWN FOR CLARITY

#4 CIRCUMFERENTIAL BRUSHED FINISH (SS ONLY)


$\phi \frac{3}{4}$ " THRU HOLE FOR REBAR PASSTHROUGH (BY OTHERS)



- NOTES:
- NON-RATED BOLLARD SHOWN
 - FOUNDATION BY OTHERS
 - MINIMUM SUGGESTED DIMENSIONS FOR FOUNDATION SHOWN
 - FOR CARBON STEEL - ZINC RICH PRIME STANDARD FINISH. GALVANIZE OR POWDERCOAT OPTIONS AVAILABLE
 - FOR STAINLESS STEEL - OPTIONAL UPGRADE TO #6 BRUSHED FINISH AVAILABLE

SECTION A-A



	NAME	DATE	 BARRIER DEFENSE SYSTEMS <small>A SHAW STAINLESS COMPANY</small>	986 ROSEDALE DR. HIRAM, GA 30141 (678) 915-2080
DRAWN BY	S.J.	12/18/2019		
CHECKED BY	J.HU.	12/18/2019		
<small>PROPRIETARY AND CONFIDENTIAL THE INFORMATION CONTAINED IN THIS DRAWING IS THE SOLE PROPERTY OF SHAW STAINLESS LLC. ANY REPRODUCTION IN PART OR AS A WHOLE WITHOUT THE WRITTEN PERMISSION OF SHAW STAINLESS LLC IS PROHIBITED.</small>			DESCRIPTION:	8" DOME TOP FIXED FOUNDATION BOLLARD
REV.	ITEM NO:		SEE SELECTOR	
			SHEET 1 OF 1	

NO MANUAL REVISIONS/CHANGES ALLOWED

8

7

6

5

4

3

2

1