

8

7

6

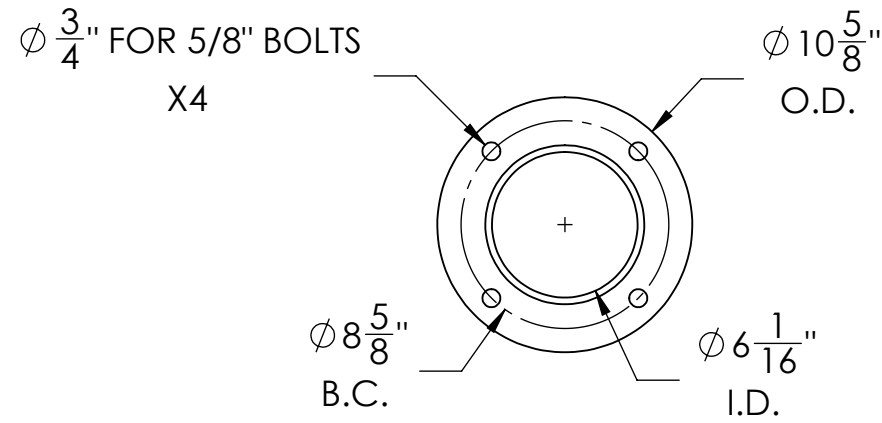
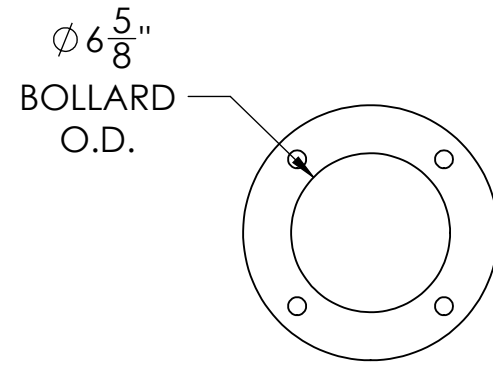
5

4

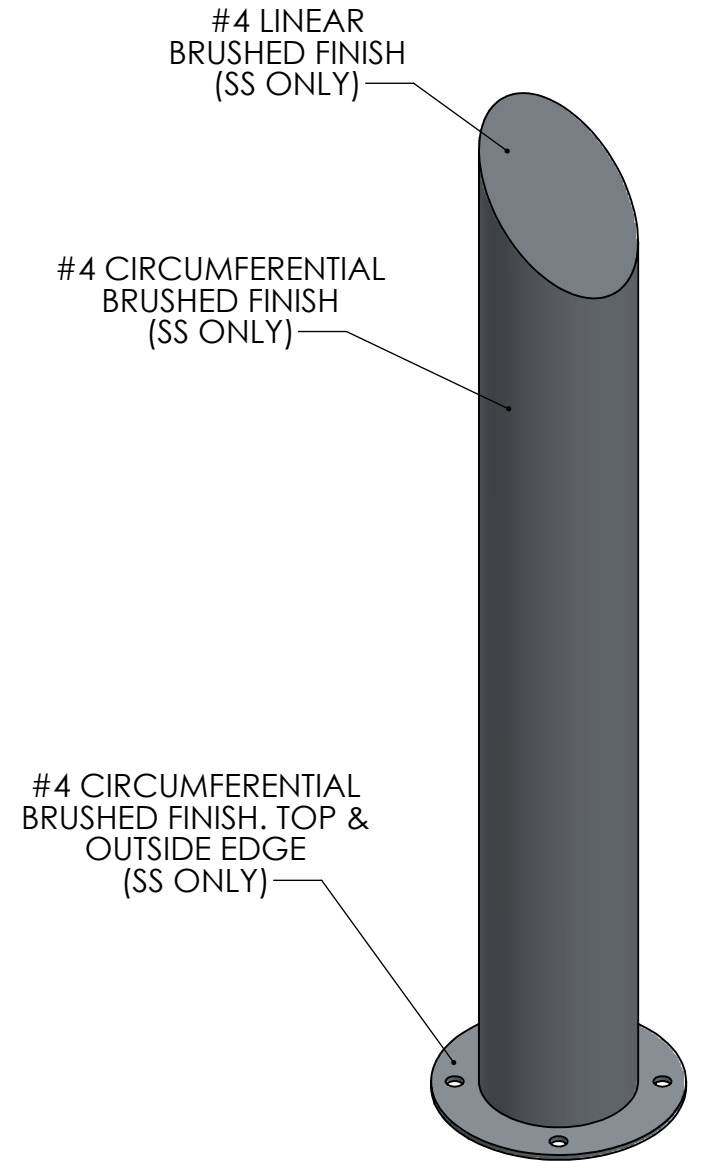
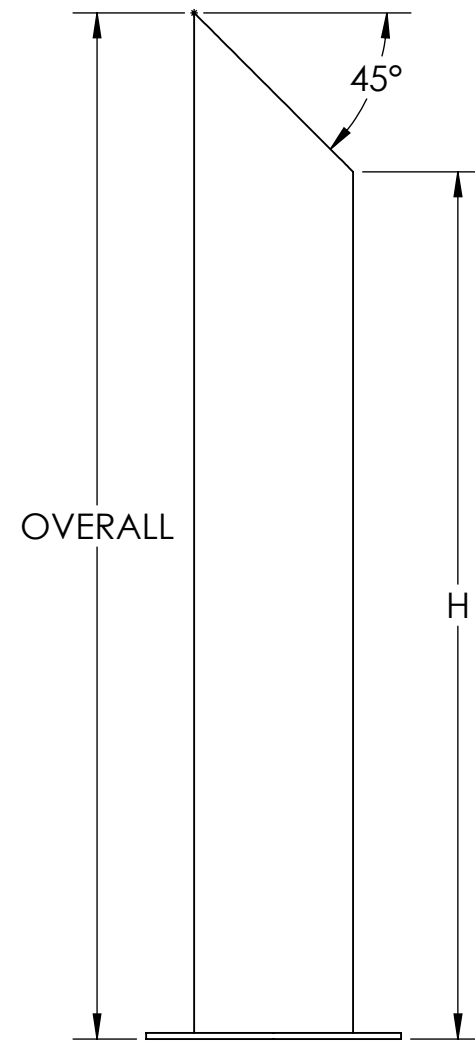
3

2

1



BOLLARD SELECTION				
SELECTION	PART NUMBER	(H)	OVERALL	MATERIAL
	FB4S0636-S	36"	42.80"	304 SS
	FB4S0642-S	42"	48.80"	
	FB6S0636-S	36"	42.80"	316L SS
	FB6S0642-S	42"	48.80"	
	FBCS0636-S	36"	42.80"	CARBON STEEL
	FBCS0642-S	42"	48.80"	



NOTES:

- NON-RATED BOLLARD SHOWN
- NO HARDWARE INCLUDED
- FOR CARBON STEEL - ZINC RICH PRIME STANDARD FINISH. GALVANIZE OR POWDERCOAT OPTIONS AVAILABLE
- FOR STAINLESS STEEL - OPTIONAL UPGRADE TO #6 BRUSHED FINISH AVAILABLE

	NAME	DATE	<b>BARRIER</b> DEFENSE SYSTEMS <small>A SHAW STAINLESS COMPANY</small>	986 ROSEDALE DR. HIRAM, GA 30141 (678) 915-2080
DRAWN BY	S.J.	12/18/2019		
CHECKED BY	J.HU.	12/18/2019	DESCRIPTION: 6" SLOPE TOP SURFACE MOUNT BOLLARD	
PROPRIETARY AND CONFIDENTIAL THE INFORMATION CONTAINED IN THIS DRAWING IS THE SOLE PROPERTY OF SHAW STAINLESS LLC. ANY REPRODUCTION IN PART OR AS A WHOLE WITHOUT THE WRITTEN PERMISSION OF SHAW STAINLESS LLC IS PROHIBITED.			REV.	ITEM NO: SEE SELECTOR
NO MANUAL REVISIONS/CHANGES ALLOWED			SHEET 1 OF 1	

8

7

6

5

4

3

2

1