

8

7

6

5

4

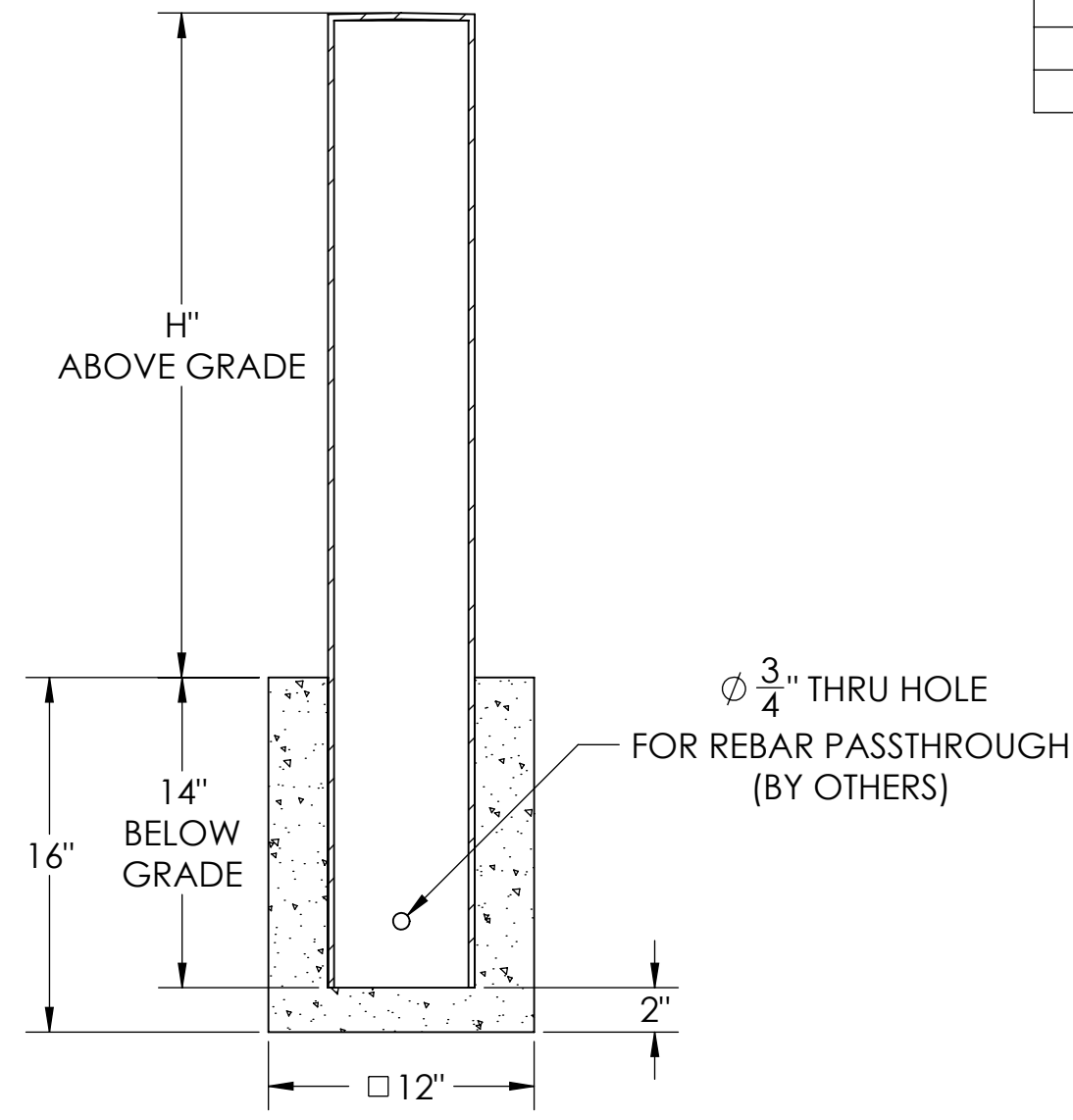
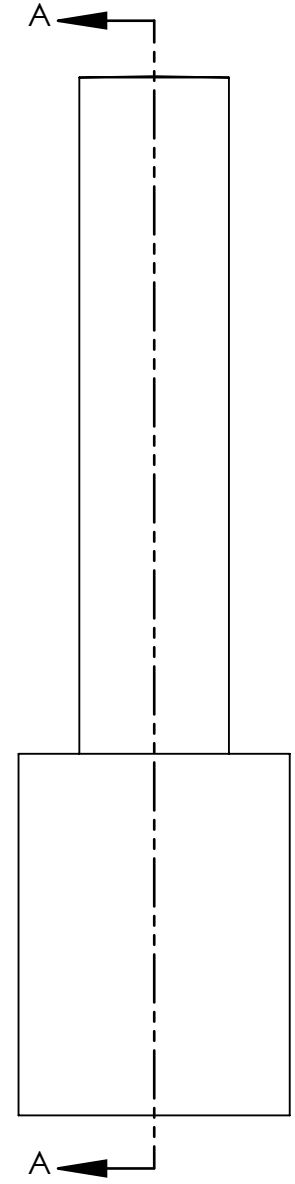
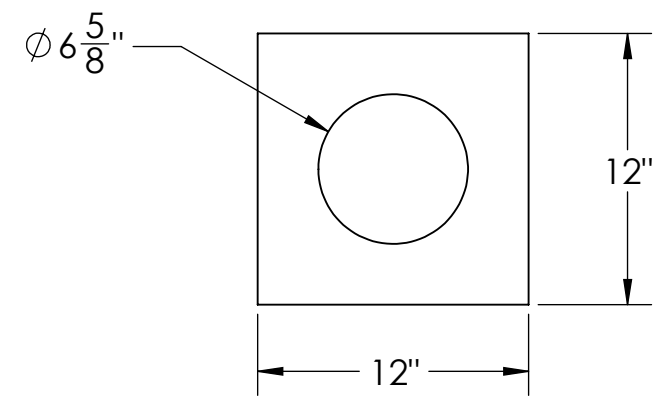
3

2

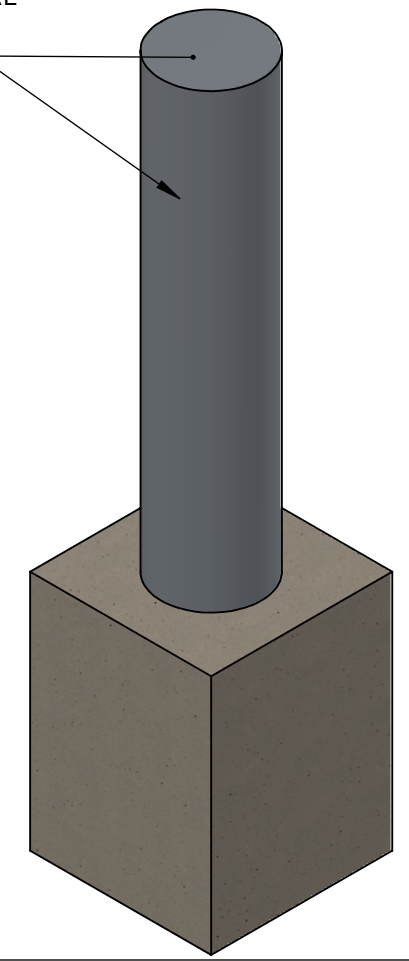
1

BOLLARD SELECTION


SELECTION	PART NUMBER	ABOVE GRADE HEIGHT (H)	MATERIAL	WEIGHT
	FB4F0630-F	30"	304 SS	73LBS
	FB4F0636-F	36"		82LBS
	FB4F0639-F	39.5"		88LBS
	FB4F0642-F	42"		92LBS
	FB6F0630-F	30"	316L SS	73LBS
	FB6F0636-F	36"		83LBS
	FB6F0639-F	39.5"		88LBS
	FB6F0642-F	42"		92LBS
	FBCF0630-F	30"	CARBON STEEL	71LBS
	FBCF0636-F	36"		80LBS
	FBCF0639-F	39.5"		86LBS
	FBCF0642-F	42"		90LBS



#4 CIRCUMFERENTIAL BRUSHED FINISH (SS ONLY)



- NOTES:
- NON-RATED BOLLARD SHOWN
 - FOUNDATION BY OTHERS
 - MINIMUM SUGGESTED DIMENSIONS FOR FOUNDATION SHOWN
 - FOR CARBON STEEL - ZINC RICH PRIME STANDARD FINISH. GALVANIZE OR POWDERCOAT OPTIONS AVAILABLE
 - FOR STAINLESS STEEL - OPTIONAL UPGRADE TO #6 BRUSHED FINISH AVAILABLE

	NAME	DATE	 BARRIER DEFENSE SYSTEMS <small>A SHAW STAINLESS COMPANY</small>	986 ROSEDALE DR. HIRAM, GA 30141 (678) 915-2080
DRAWN BY	S.J.	12/18/2019		
CHECKED BY	J.HU.	12/18/2019	DESCRIPTION: 6" FLAT TOP FIXED FOUNDATION BOLLARD	
<small>PROPRIETARY AND CONFIDENTIAL THE INFORMATION CONTAINED IN THIS DRAWING IS THE SOLE PROPERTY OF SHAW STAINLESS LLC. ANY REPRODUCTION IN PART OR AS A WHOLE WITHOUT THE WRITTEN PERMISSION OF SHAW STAINLESS LLC IS PROHIBITED.</small>			REV.	ITEM NO: SEE SELECTOR
NO MANUAL REVISIONS/CHANGES ALLOWED			SHEET 1 OF 1	



8

7

6

5

4

3

2

1