

8

7

6

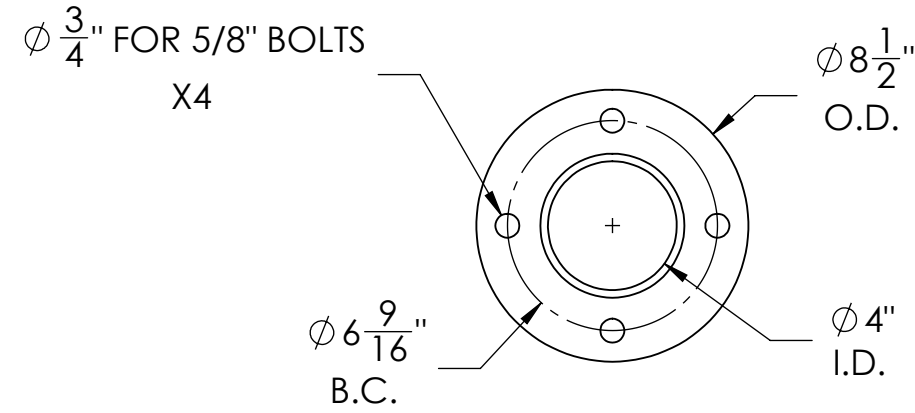
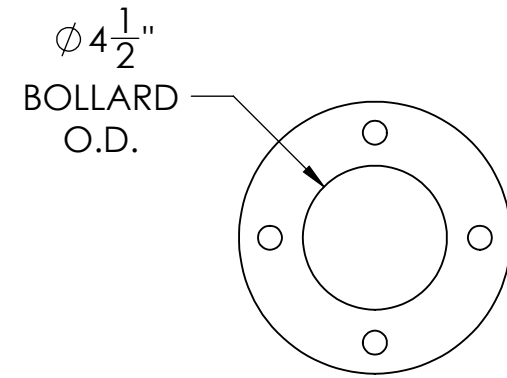
5

4

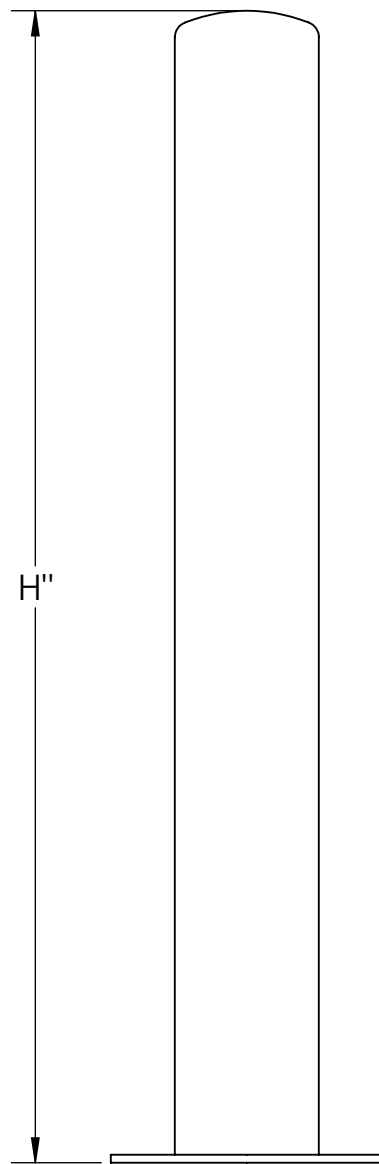
3

2

1



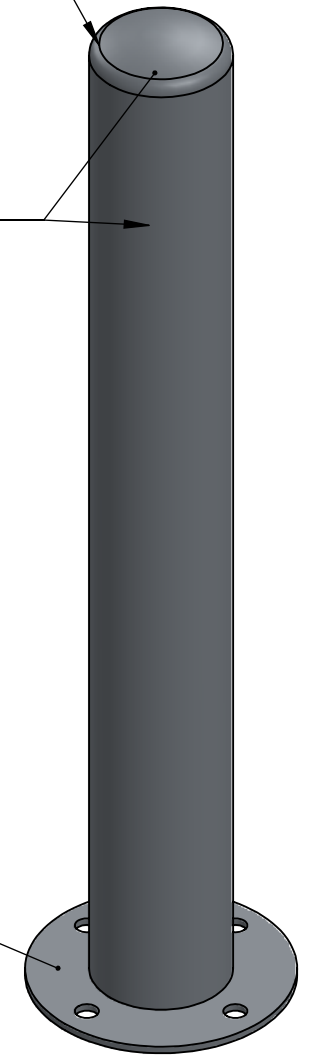
BOLLARD SELECTION			
SELECTION	PART NUMBER	HEIGHT (H)	MATERIAL
	FB4D0436-S	36"	304 SS
	FB4D0442-S	42"	
	FB6D0436-S	36"	316 SS
	FB6D0442-S	42"	
	FBCD0436-S	36"	CARBON STEEL
	FBCD0442-S	42"	



TANGENT LINES  
SHOWN FOR CLARITY

#4 CIRCUMFERENTIAL  
BRUSHED FINISH  
(SS ONLY)

#4 CIRCUMFERENTIAL  
BRUSHED FINISH, TOP &  
OUTSIDE EDGE  
(SS ONLY)



NOTES:

- NON-RATED BOLLARD SHOWN
- NO HARDWARE INCLUDED
- FOR CARBON STEEL - ZINC RICH PRIME STANDARD FINISH. GALVANIZE OR POWDERCOAT OPTIONS AVAILABLE
- FOR STAINLESS STEEL - OPTIONAL UPGRADE TO #6 BRUSHED FINISH AVAILABLE

	NAME	DATE	<p>986 ROSEDALE DR. HIRAM, GA 30141 (678) 915-2080</p>
DRAWN BY	S.J.	12/18/2019	
CHECKED BY	J.HU.	12/18/2019	
<p>PROPRIETARY AND CONFIDENTIAL THE INFORMATION CONTAINED IN THIS DRAWING IS THE SOLE PROPERTY OF SHAW STAINLESS LLC. ANY REPRODUCTION IN PART OR AS A WHOLE WITHOUT THE WRITTEN PERMISSION OF SHAW STAINLESS LLC IS PROHIBITED.</p>			DESCRIPTION: 4" DOME TOP SURFACE MOUNT BOLLARD
REV.	ITEM NO:		SEE SELECTOR
			SHEET 1 OF 1

NO MANUAL REVISIONS/CHANGES ALLOWED

8

7

6

5

4

3

2

1